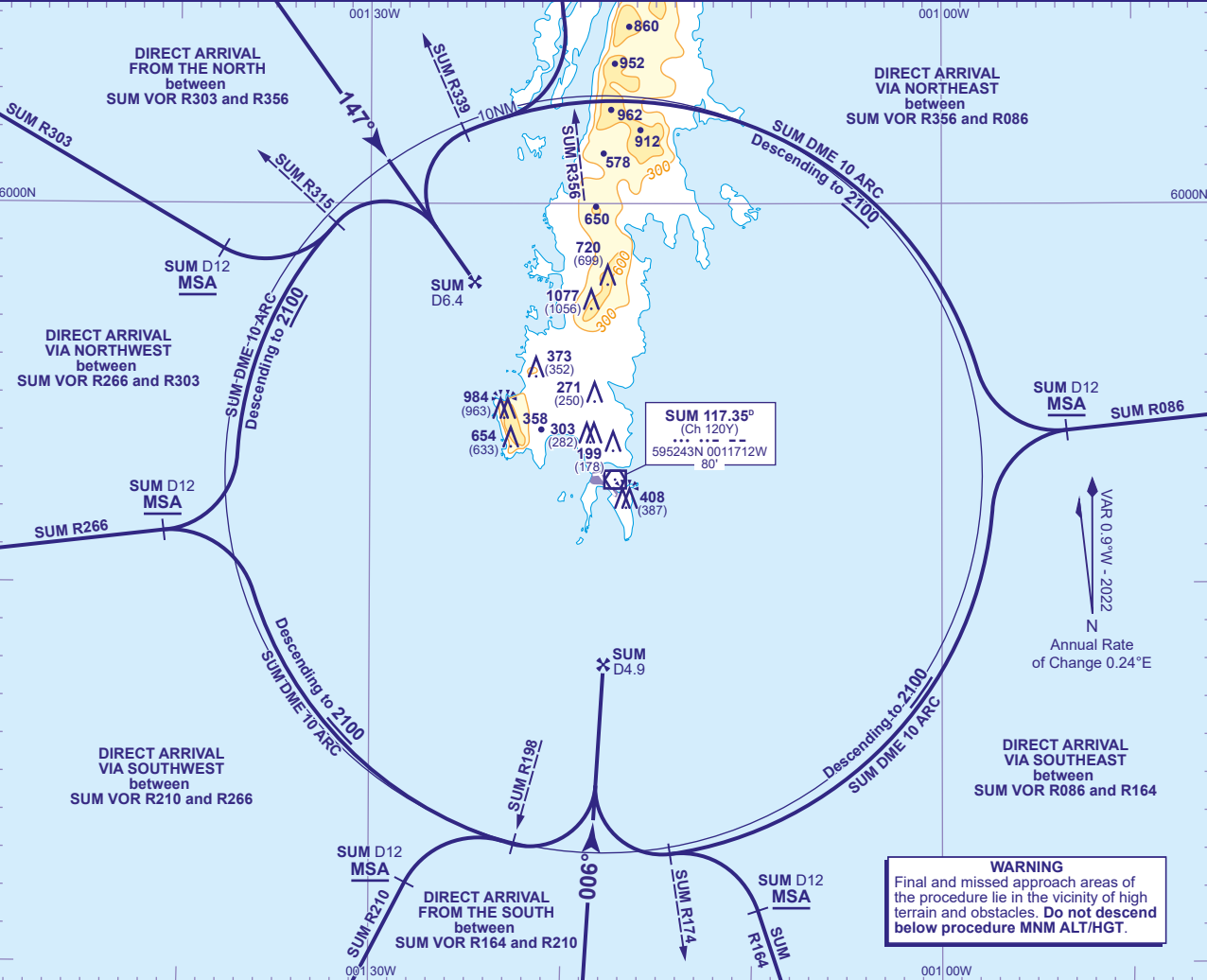


INSTRUMENT APPROACH CHART - ICAO

SUMBURGH

Direct Arrivals
VOR/DME 147°/006°
TO AERODROME
(ACFT CAT A,B,C)

<div><div>MSA</div><div><div>24</div><div>090°</div><div>21</div></div><div>VOR SUM</div></div>	TWR 118.255	SUMBURGH TOWER	AD ELEVATION 21	TRANSITION ALTITUDE 6000
	RAD 131.300, 123.155	SUMBURGH RADAR		
	ATIS 125.855	SUMBURGH INFORMATION	OBSTACLE ELEVATION 1077 AMSL (1056) (ABOVE THR)	
	AFIS 118.255	SUMBURGH INFORMATION	BEARINGS ARE MAGNETIC	



DIRECT ARRIVALS VOR DME 006° TO AERODROME

From the Southwest (SUM VOR R210 to R266)
Track towards VOR SUM on any radial between SUM VOR R210 and R266 **not below MSA**. At SUM DME 12 turn right to establish on the SUM DME 10 arc anti-clockwise. Once established on the arc descend to **not below 2100**. At SUM R198 turn left to establish on the FAT. Once established continue as for main procedure.

From the Southeast (SUM VOR R086 to R164)
Track towards VOR SUM on any radial between SUM VOR R086 and R164 **not below MSA**. At SUM DME 12 turn left to establish on the SUM DME 10 arc clockwise. Once established on the arc descend to **not below 2100**. At SUM R174 turn right to establish on the FAT. Once established continue as for main procedure.

From the South (SUM VOR R164 to R210)
Establish on the extended FAT **not below MSA**. Once established and within SUM DME 10 descend to **1500** and continue as for main procedure.

DIRECT ARRIVALS VOR DME 147° TO AERODROME

From the Northwest (SUM VOR R266 to R303)
Track towards VOR SUM on any radial between SUM VOR R266 and R303 **not below MSA**. At SUM DME 12 turn left to establish on the SUM DME 10 arc clockwise. Once established on the arc descend to **not below 2100**. At SUM R315 turn right to establish on the FAT. Once established continue as for main procedure.

From the Northeast (SUM VOR R356 to R086)
Track towards VOR SUM on any radial between SUM VOR R356 and R086 **not below MSA**. At SUM DME 12 turn right to establish on the SUM DME 10 arc anti-clockwise. Once established on the arc descend to **not below 2100**. At SUM R339 turn left to establish on the FAT. Once established continue as for main procedure.

From the North (SUM VOR R303 to R356)
Establish on the extended FAT **not below MSA**. Once established descend to **2100** and continue as for main procedure.